

Clarke®



RECHARGEABLE LED WORKLIGHT MODEL NO: SMD800R

PART NO: 4003648

USER INSTRUCTIONS

UK
CA | CE



ORIGINAL INSTRUCTIONS

GC-03/25

INTRODUCTION

Thank you for purchasing this CLARKE portable worklight.

Before attempting to use this product, please read this manual thoroughly and follow the instructions carefully. In doing so you will ensure the safety of yourself and that of others around you, and you can look forward to your purchase giving you long and satisfactory service.

TECHNICAL SPECIFICATIONS

Model	SMD800R
Operating voltages	5 V DC - 1A
Charging cable length	1 M
LED Wattage consumption	8 W
Lithium battery	3.7V DC /5200 mAh
Efficiency	100 Lm/W
Lighting source	SMD 20LED array
Light output (luminous flux)	800 lumens
Colour temperature (rendering)	6500 K
Time to Fully discharge	5 hours@100%
Time to Fully charge	12 hours
Ingress Protection (IP rating)	IP65
Operating temperatures	0 to +45°C
Dimension (H x Dx W)	240 x 150 x 150 mm
Weight	0.9 Kg

GUARANTEE

This product is guaranteed against faulty manufacture for a period of 12 months from the date of purchase. Please keep your receipt which will be required as proof of purchase. This guarantee is invalid if the product is found to have been abused or tampered with in any way or not used for the purpose for which it was intended.

Faulty goods should be returned to their place of purchase, no product can be returned to us without prior permission. This guarantee does not effect your statutory rights.

SAFETY PRECAUTIONS

1. **DO NOT** look directly at the lamp when switched on as this can harm your eyes.
2. **DO NOT** use this worklight if it has a damaged lens or casing
3. **DO NOT** touch the lamp when your hands are wet.
4. **DO NOT** attempt to disassemble or repair the worklight.
5. **DO NOT** leave the worklight unattended when switched on.
6. **NEVER** aim the beam at any person or an object other than the work piece.

CHARGING USING THE USB CABLE

Charge the battery pack before using the lamp for the first time.

1. Open the protective cover and insert the charging lead into the charging socket and the other end into a suitable USB socket or the 3-pin mains adapter plug supplied.
2. Plug the adapter into a suitable mains outlet and switch on.

When the battery is fully charged the three LED indicators all illuminate (The red light, yellow light and green light will light up in sequence).

When charged, remove the charging cable and close the protective cover to protect from water.

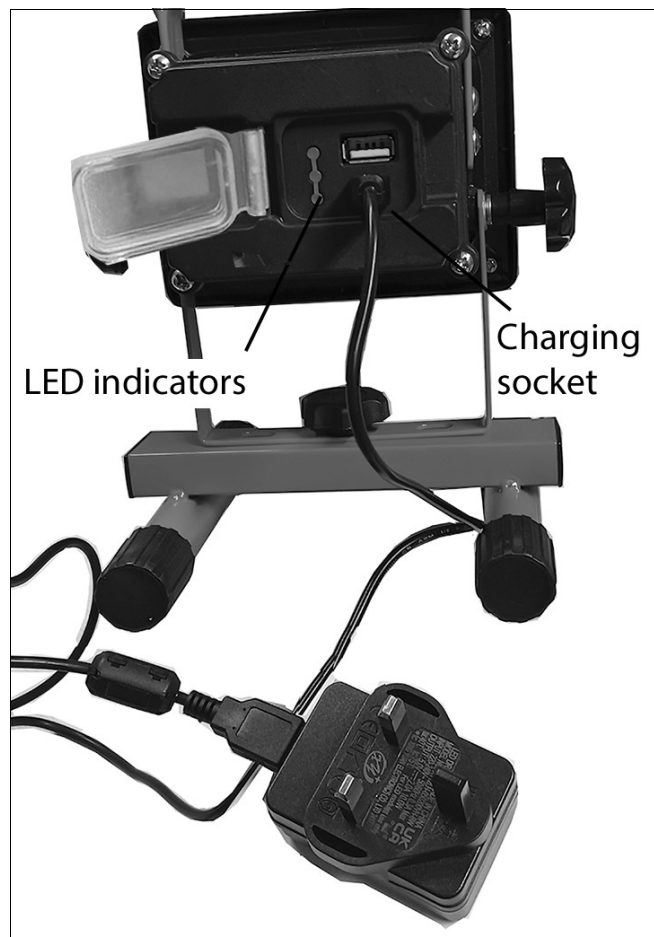
NOTE: The LED indicators will show only red when the battery pack is run down and needs recharging.

- CHARGING TIME- 3-4 hours

To ensure maximum life from the battery, recharge after every use if possible and thereafter, once every three months. **ALWAYS** avoid leaving the battery in a state of discharge which would lead to reduced performance and to premature battery failure.

The worklight should not be used while using the charging cable.

NOTE: If the battery requires replacement take the unit to your CLARKE dealer.



ADJUSTMENT & USE

The LED work light's stand is adjustable. Loosen the locking knobs on both sides and adjust the stand to the desired position and re-tighten the knobs.

The worklight head can be tilted vertically up to 45°.

SWITCHING ON

1. Press the red button once to turn on 100% brightness.
1. Press a second time to turn on 50% brightness
2. Press a third time to make the lamp flash red (S-o-S) continuously.
3. Press a fourth time to turn off.
4. Position the worklight near the work. Adjust the stand to direct the light beam.



CAUTION: **DO NOT** LOOK DIRECTLY INTO THE LAMP WHEN SWITCHED ON AS THIS CAN DAMAGE YOUR EYES.

DISCHARGING TIME:

- About 5 hours at 100% brightness
- Approx 10 hours at 50% brightness
- Approx 20 hours at 25% brightness

USB OUTPUT

The USB output socket can be used to power all kinds of devices which can be charged by the USB cable such as mobile phones, MP3/MP4, Bluetooth headset etc.

NOTE: The USB output will stop automatically if the total working current of the total connected device(s) exceeds the permitted limit.



CARE & STORAGE

1. When not in use, switch off & unplug from the USB cable.
2. Store in a dry place, out of reach of children. **DO NOT** leave it exposed to the elements & avoid direct sunlight, direct heat, rain/moisture etc.
3. Keep the external surfaces clean. Avoid impact damage & **DO NOT** allow this product to come into contact with abrasive or corrosive materials such as solvents which will damage the finish. Use a dry cloth to wipe over the lamp components.
4. The LED light source cannot be replaced but has a life expectancy of approximately 30,000 hours.
5. **DO NOT** attempt to replace or change or the LEDs if the protective glass is cracked or broken it must be replaced before the work light is used again.
6. **DO NOT** attempt to repair or modify this product or attempt any electrical repair yourself. Consult the CLARKE Service Department.

BATTERY USE AND CARE

1. Recharge only with the charging cable supplied.
2. Under abusive conditions, liquid could be lost from the battery; avoid contact. If contact accidentally occurs, flush with water. If liquid contacts eyes, additionally seek medical help. Liquid ejected from the battery may cause irritation or burns.

ENVIRONMENTAL RECYCLING POLICY



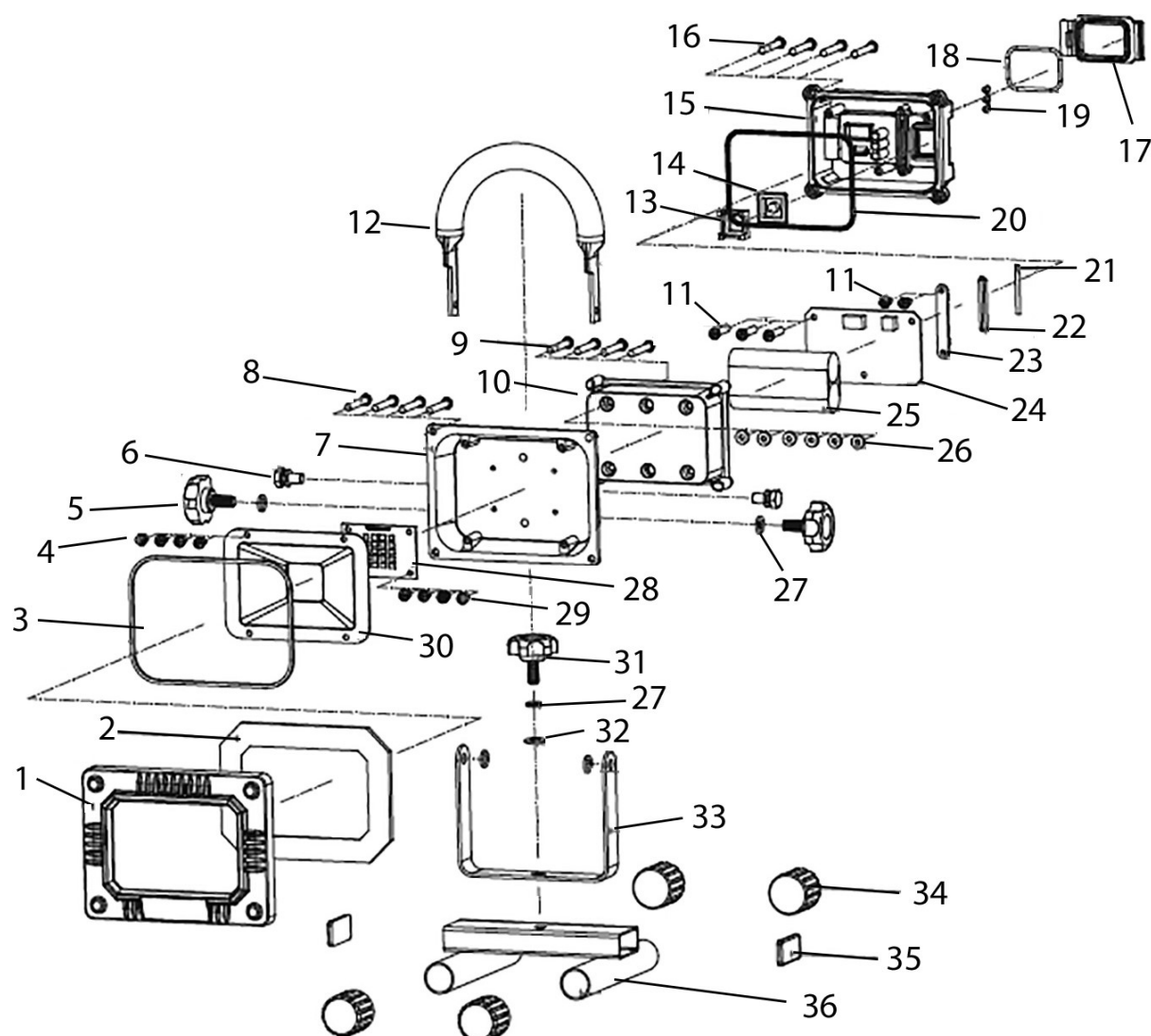
Do not dispose of this product with general household waste. All tools, accessories and packaging should be sorted, taken to a recycling centre and disposed of according to the laws governing Waste Electrical and Electronic Equipment.

Through purchase of this product, the customer is taking on the obligation to deal with the WEEE in accordance with the WEEE regulations in relation to the treatment, recycling & recovery and environmentally sound disposal of the WEEE.

In effect, this means that this product must not be disposed of with general household waste. It must be disposed of according to the laws governing Waste Electrical and Electronic Equipment (WEEE) at a recognised disposal facility.

The Lithium Ion battery falls under the Waste Batteries and Accumulators Regulations 2009 and should be disposed of in a controlled manner if necessary.

COMPONENT PARTS



1	Face frame
2	Tempered glass
3	Sealing ring
4	Screw M3x6
5	Adjusting knob M6
6	Nut M4x8
7	Aluminium housing
8	Screw M3x10
9	Screw M4x8
10	Battery box
11	Screw st2.6x6
12	Portable handle

13	Switch bracket
14	Switch cap
15	Rear housing
16	Screw st4x12
17	Waterproof cap
18	Gel sealing ring
19	Lamp guide
20	Gel sealing gasket
21	Roll pin
22	Gel sealing gasket
23	Press plate
24	Printed circuit board

25	Battery pack
26	Waterproof seal
27	Spring washer 6mm
28	LED panel
29	Screw M3x4
30	Reflector
31	Screw M6x15
32	Flat washer 6mm
33	Light support
34	Foot sleeve
35	Plastic cover
36	H shaped stand

DECLARATIONS OF CONFORMITY



Clarke
INTERNATIONAL
Fitzwilliam Hall, Fitzwilliam Place, Dublin 2

DECLARATION OF CONFORMITY

This is an important document and should be retained.

We hereby declare that this product(s) complies with the following legislation:


2006/66/EC	Battery Directive
2014/30/EU	Electromagnetic Compatibility Directive
2014/35/EU	Low Voltage Directive
2011/65/EU	Restriction of Hazardous Substances (RoHS) Directive

The following standards have been applied to the product(s):

EN IEC 55015:2019+A11:2020, IEC 62321-3-1:2013, EN 61000-3-2:2014, EN 55015:2013+A1:2015,
EN 61347-2-13:2014+A1:2017, IEC 62321-7-1:2015, IEC 62321-7-2:2017, EN IEC 61000-3-2:2019,
IEC 62321-4:2013 AMD1:2017, EN 61000-3-3:2013+A1:2019, EN 61000-3-3:2013, EN 61547:2009,
EN 62321-3-1:2014, IEC 62321-5:2013, IEC 62321-6:2015, IEC 62321-8:2017, EN 62321-2:2014,
EN 61347-1:2015+A1:2021, EN 62493:2015

The technical documentation required to demonstrate that the product(s) meet(s) the requirement(s) of the aforementioned legislation has been compiled and is available for inspection by the relevant enforcement authorities.

The CE mark was first applied in: 2024

Product Description: LED Light
Model Number(s): SMD800R
Serial/Batch Number: Refer to product/packaging label
Date of Issue: 16/12/2024
Signed: 

J.A. Clarke
Director

SMD800R CE Clarke DOC 121624

Page 1 of 1



Clarke
INTERNATIONAL
Hemmell Street, Epping, Essex, CM16 4LG

DECLARATION OF CONFORMITY

This is an important document and should be retained.

We hereby declare that this product(s) complies with the following legislation:

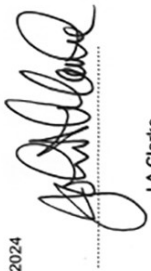
The Batteries and Accumulators (Placing on the Market) Regulations 2008
The Electromagnetic Compatibility Regulations 2016
The Electrical Equipment (Safety) Regulations 2016
The Restriction of the Use of Certain Hazardous Substances in Electrical and Electronic Equipment Regulations 2012

The following standards have been applied to the product(s):

EN IEC 55015:2019+A11:2020, IEC 62321-3-1:2013, EN 61000-3-2:2014, EN 55015:2013+A1:2015,
EN 61347-2-13:2014+A1:2017, IEC 62321-7-1:2015, IEC 62321-7-2:2017, EN IEC 61000-3-2:2019,
IEC 62321-4:2013 AMD1:2017, EN 61000-3-3:2013+A1:2019, EN 61000-3-3:2013, EN 61547:2009,
EN 62321-3-1:2014, IEC 62321-5:2013, IEC 62321-6:2015, IEC 62321-8:2017, EN 62321-2:2014,
EN 61347-1:2015+A1:2021, EN 62493:2015

The technical documentation required to demonstrate that the product(s) meet(s) the requirement(s) of the aforementioned legislation has been compiled and is available for inspection by the relevant enforcement authorities.

The UKCA mark was first applied in: 2024

Product Description: LED Light
Model Number(s): SMD800R
Serial/Batch Number: Refer to product/packaging label
Date of Issue: 16/12/2024
Signed: 

J.A. Clarke
Director

SMD800R UKCA Clarke DOC 121624

Page 1 of 1

A SELECTION FROM THE VAST RANGE OF

Clarke®

QUALITY PRODUCTS



AIR COMPRESSORS
From DIY to industrial, Plus air tools, spray guns and accessories.

GENERATORS
Prime duty or emergency standby for business, home and leisure.

POWER WASHERS
Hot and cold, electric and engine driven - we have what you need

WELDERS
Mig, Arc, Tig and Spot.
From DIY to auto/industrial.

METALWORKING
Drills, grinders and saws for DIY and professional use.

WOODWORKING
Saws, sanders, lathes, mortisers and dust extraction.

HYDRAULICS
Cranes, body repair kits, transmission jacks for all types of workshop use.

WATER PUMPS
Submersible, electric and engine driven for DIY, agriculture and industry.

POWER TOOLS
Angle grinders, cordless drill sets, saws and sanders.

STARTERS/CHARGERS
All sizes for car and commercial use.



PARTS & SERVICE:

0208 988 7400

Parts Enquiries
Parts@clarkeinternational.com

Servicing & Technical Enquiries
Service@clarkeinternational.com

SALES: UK 01992 565333 or Export 00 44 (0)1992 565335

Clarke® INTERNATIONAL Hemnall Street, Epping, Essex CM16 4LG
www.clarkeinternational.com